



# St Margaret Mary's School

*Listen Share Act*

7 Chetwynd Road, Merrylands 2160 Tel (02) 8633 8400 Fax (02) 8633 8499  
Email: stmargaretmarys@parra.catholic.edu.au www.stmmerrylands.catholic.edu.au

Newsletter No 13

## Update

Wednesday, 12<sup>th</sup> May, 2021

### Diary Dates

#### Thursday, 13<sup>th</sup> May

- 9:00am - 10:30am NAPLAN Conventions of Language for Students in Yr 3
- 11:30am - 1:00pm NAPLAN Conventions of Language for Students in Yr 5

#### Friday, 14<sup>th</sup> May

- 9:00am - 10:30am NAPLAN Numeracy for Students in Yr 3
- 11:30am - 1:00pm NAPLAN Numeracy for Students in Yr 5

#### Monday, 17<sup>th</sup> May

- 8:40am Whole School Assembly Parents are welcome to attend.
- NAPLAN Catch Up tests all week.

#### Tuesday, 18<sup>th</sup> May

#### Wednesday, 19<sup>th</sup> May

### Leaving

If you know your child/ren will not be returning to this school in 2021, please let the office know as soon as possible, in writing. It is a CEDP Policy that 10 school weeks notice is given to the principal before the removal of your child from the school, otherwise a full term fees will be required to be paid.

### Change of Details

If you have moved house or changed your contact details, please notify the school office as soon as possible to update your details in case of an emergency.

### Skoolbag App

All parents are encouraged to have the Skoolbag App, as this is the main preference for communication to all parents. Our School Name for Skoolbag App is SMMPM.



## Administration

### COVID Update

In regards to COVID, any child exhibiting flu like symptoms is to be kept at home and undergo a COVID test. (Mr Mills had his on Saturday and returned a negative result).

Thank you to the children who have returned to school for providing their Doctor's Certificate/Negative COVID result.

**Change in season = Change in weather = Change in health**

**Hygiene;** Everyone must practise good hygiene to protect against infection and prevent the spread of COVID-19 or any other contagious diseases. We must continue good hygiene practises, including:

- all students and staff use hand sanitiser when entering school
- washing hands with soap and water for 20 seconds at regular intervals
- covering coughs and sneezes with one's elbow or a tissue
- placing used tissues straight into the bin
- avoiding touching one's eyes, nose and mouth
- not sharing food or drink



### Enrolments

Enrolments for Kindergarten 2022 are now taking place. If your child was born between 1<sup>st</sup> August, 2016 and 31<sup>st</sup> July, 2017, please collect an enrolment form from the school office. Interviews have almost been completed. Letters of offer have been sent out to families, If you have not yet received your letter please contact the school office as soon as possible. If you have collected an enrolment form and not returned it to the school office please do so as soon as possible, along with the relevant documentation then you will receive an interview time for you and your child. We have over 110 applications.

### School Fees

Term Two fees are due by 26<sup>th</sup> May, unless you have opted for an arrangement with the school for the year. Families who have not yet received their statements please contact the school office as soon as possible. If you have any queries regarding your statements please contact Maria in the office.

### Excursions and Incursions

It is important for all students and parents to note that all incursions and excursions are an important part of learning at STMM's. With regards to children attending (including sporting events), the school has a process whereby children with inappropriate behaviour may be unable to participate in these events. The decisions regarding students attendance is the responsibility of the Principal and Assistant Principal. The school will endeavour to consult and inform parents if there are concerns about a child's attendance at these events.

### Winter Uniform

Students are required to be dressed in winter uniform for Term Two. There will be a Four week grace period for students. All students must be in full school winter uniform by **Monday, 24<sup>th</sup> May.**

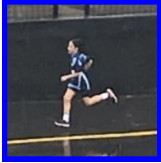
Lowes is the only supplier of StMM's school uniforms. Uniforms brought from any other supplier is in breach of contract and may not be correct.

## Personal Growth

### Diocesan Cross Country

On Tuesday, 4<sup>th</sup> May the top six fastest boys and girls from each age group participated in the Diocesan Cross Country at Eastern Creek. It was an early start as the students who participated had to be at school by 7:00am but we were all so excited that it didn't matter! As we reached Eastern Creek the clouds came over and it started to rain so we all got drenched! The 8, 9 and 10 year old competitors ran 2km and the 11 and 12 year old's had to run 3km. We ran on grass, rocks, up hills, through mud and on concrete to complete the course. Thank you to all the parents who came to cheer us on and a special thanks to Mrs Foley for training us several times a week to prepare for the day and for organising it.

*By Christopher Ndaira and Xavier Tautu*



## Partnership

### StMM's School Website

Please visit our StMM's School Website:

<https://www.stmmmerrylands.catholic.edu.au>

You will find all the events celebrated at StMM's in 2021, under the 'Community' heading and in the 'Gallery' section. We hope you enjoy them.



### Mother's Day Breakfast, Stall & Liturgy



## Partnership

### Social Media

In today's world more and more children are accessing movies, video games, Tiktok and social media platforms on tablets, phones, chromebooks and laptops. This allows their screen time to be a private platform where it may be difficult for parents to see what is being viewed. This is a challenge for parents and guardians to ensure that the screen vision is appropriate to the age of the child. We ask that you monitor what your child is accessing and speak to them about internet safety. Most apps have an age appropriate classification.

### P&F News

#### Second Hand Uniform Shop

The Second Hand Uniform Shop will only open on the first Monday of each month from 8:50am - 9:30am after the morning assembly.

#### Volunteer Requirements

**All parents/carers that wish to assist the P&F in any activities, MUST complete the CEDP Building Child Safe Communities online undertaking form and training module for volunteers. You may be asked to leave if you have not completed the requirements.**

This can be accessed via

1. [www.parra.catholic.edu.au](http://www.parra.catholic.edu.au)
2. Click on About Us
3. Click on Building Child Safe Communities
4. Read the questions and follow the instructions carefully

CEDP have made changes to the requirements for Building Child Safe Communities training. Therefore If you have completed the BCSC training prior to 2020, you will need to complete the new training as soon as possible. Thank you for your continued support.